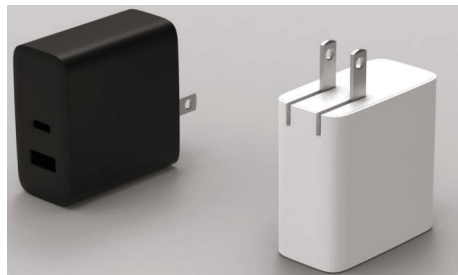


# GAN FAST CHARGE

## 氮化镓快速充电器

## PD65 series 系列

### 结构及外形尺寸 Dimensions of structure and shape



Part Number型号	Input Rating 输入额定值	Output mode 输出方式	O.P.V 输出电压	O.P. C 输出电流	Tderance 输出公差	No load power consumption 待机功耗	AC plug AC插脚	Power 功率
GxzzCvvvvaaaaWA	100~240V50/60Hz	单C口	5.0VDC	3.00A	±5%	≤0.21W	UL/TUV/UK/SAA	65W max
			9.0VDC	3.00A	±5%			
			12.0VDC	3.00A	±5%			
			15.0VDC	3.00A	±5%			
			20.0VDC	3.25A	±5%			
		A+C组合/单A口	5.0VDC	2.40A	±5%			
			5.0VDC	2.40A	±5%			
			5.0VDC	3.00A	±5%			
			9.0VDC	3.00A	±5%			
			12.0VDC	3.00A	±5%			
GxzzCvvvvaaaaWA	100~240V50/60Hz	单C口	5.0VDC	3.00A	±5%	≤0.21W	UL/TUV/UK/SAA	65W max
			9.0VDC	3.00A	±5%			
			12.0VDC	3.00A	±5%			
			15.0VDC	3.00A	±5%			
			20.0VDC	3.25A	±5%			
		单A口	5.0VDC	3.00A	±5%			
			9.0VDC	3.00A	±5%			
			12.0VDC	3.00A	±5%			
			15.0VDC	3.00A	±5%			
			20.0VDC	3.00A	±5%			
A+C组合/单A口	10.0VDC	6.5A (SUPERVOOC)	±5%			20W		
A+C组合/单C口						45W		

以上C口/PPS:3.3~11.0V 3A/3.3~16.0V 2. A (30W max)

### 特性 Features/应用 Applications

国际通用交流范围输入  
world wide AC Input  
小体积，轻巧便携  
Light&Compact design  
多种保护功能  
Many kinds of protection  
平均故障间隔时间10000小时  
10,000 hours of Mean time between failures tim  
适用于小家电类、医疗类、音频、视频或信息技术类、消费类等  
Applicable to small household appliances, medical, audio, video or information technology, consumer, etc  
符合能源之星六级  
Energy Efficiency complied with DoE VI level  
兼容快充协议：APPLE2.4A/QC2.0/QC3.0/AFC/FCP/PD3.0/PPS/BC1.21 等  
Compatible with fast charger protocol (PowerDeliverySpecification) :APPLE2.4A/QC2.0/QC3.0/AFC/FCP/PD3.0/PPS/BC1.21 etc.

### 参数 Specification

Input Voltage	输入电压	100-240V 50/60Hz 1.5A Max
Inrush Current	浪涌电流	less than 60A, 240Vac, 25°C
Leakage Current	泄漏电流	less than 0.25mA, at 264Vac
Efficiency	效率	87.0%, Min
O.P.V	输出电压	3.0 - 20VDC
O.P.C	输出电流	0.01~6.50A
No Load Power Consumption	待机功耗	≤0.21W, 115/230VAC
Ripple & Noise(max)	纹波与噪声	≤1%
Short Circuit Protection	短路保护	Short at DC and no damage
Work Temp. & Humidity	工作温湿度范围	0°C ~ 40°C, 5%~90% RH Non-Condensing(无凝露)
Storage Temp.&Humidity	库存温湿度范围	-20°C ~ 85°C 5%~90% RH Non-Condensing(无凝露)
Altiude	海拔高度	Less than 3000m.
Withstand Voltage	绝缘耐压	AC 3000V, 1 minute, 10mA Max.
Insulation Resistance	绝缘阻抗	Input to Output:≥50MΩ, at 500Vdc
Safety Standards	安规标准	CCC,UL/CUL,PSE,GS,KO,SAA,BS,ETL...ect
EMC	电磁兼容标准	EMI: IEC/EN55032B, IEC/EN 55014, GB9254, FCC,

★ 产品可以按客户要求定制

Products can be customized according to customer requirements